



**Design out the box**



# Wasted Space

## Context

The school has received a generous donation from the local community to develop areas of the school that are considered **wasted space**. To qualify for the money the school must meet certain terms and conditions.

## Design Task

The school has identified the 'Quad; area as wasted space,

Start to consider what you will design in this space. The Headteacher has drawn up a list of requirements in order for the area to pass health and safety requirements and the conditions in place to receive the money.



**The specification placed on the area by the Headteacher is as follows:**

- It must be suitable for all age groups, very young to very older students.
- It must be safe
- There should be grassed, paved, and all weather play sections in the area and a wild garden area to help bring insects, birds and animals to the school if outside.
- It must improve the look of the area and the school.
- There should be quiet areas and areas for noise.
- There should be facilities for team games to suit both male and female, young and older students.
- There should be plants and trees planted that will with time mature and make the area even better.

Your task is to produce 3D sketches and a plan or birds eye view of an area that will meet all the points listed in the specification above.

## **Special note on Safety**

This not only includes using safe play equipment but also making sure that the area has no danger areas i.e. Places where someone could get stuck or potentially fall of or get injured.

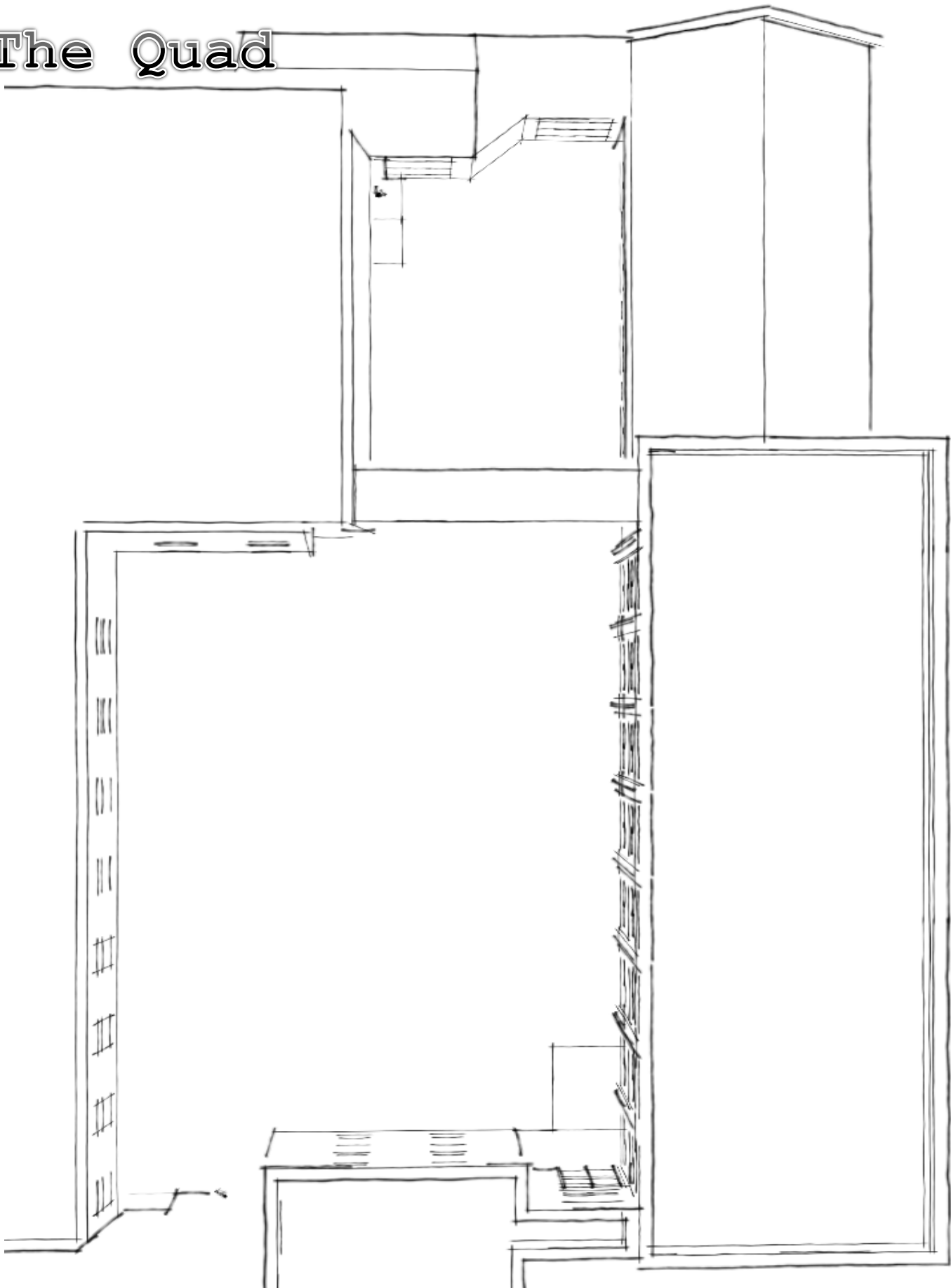
## **Top Tips**

1. First start by making a list of things that could be included
2. Think outside the box, be creative!
3. Use the symbols included for help keep your plan to scale and realistic.
4. Use the plan view and 3D view of the quad to submit your design proposals



# Wasted Space

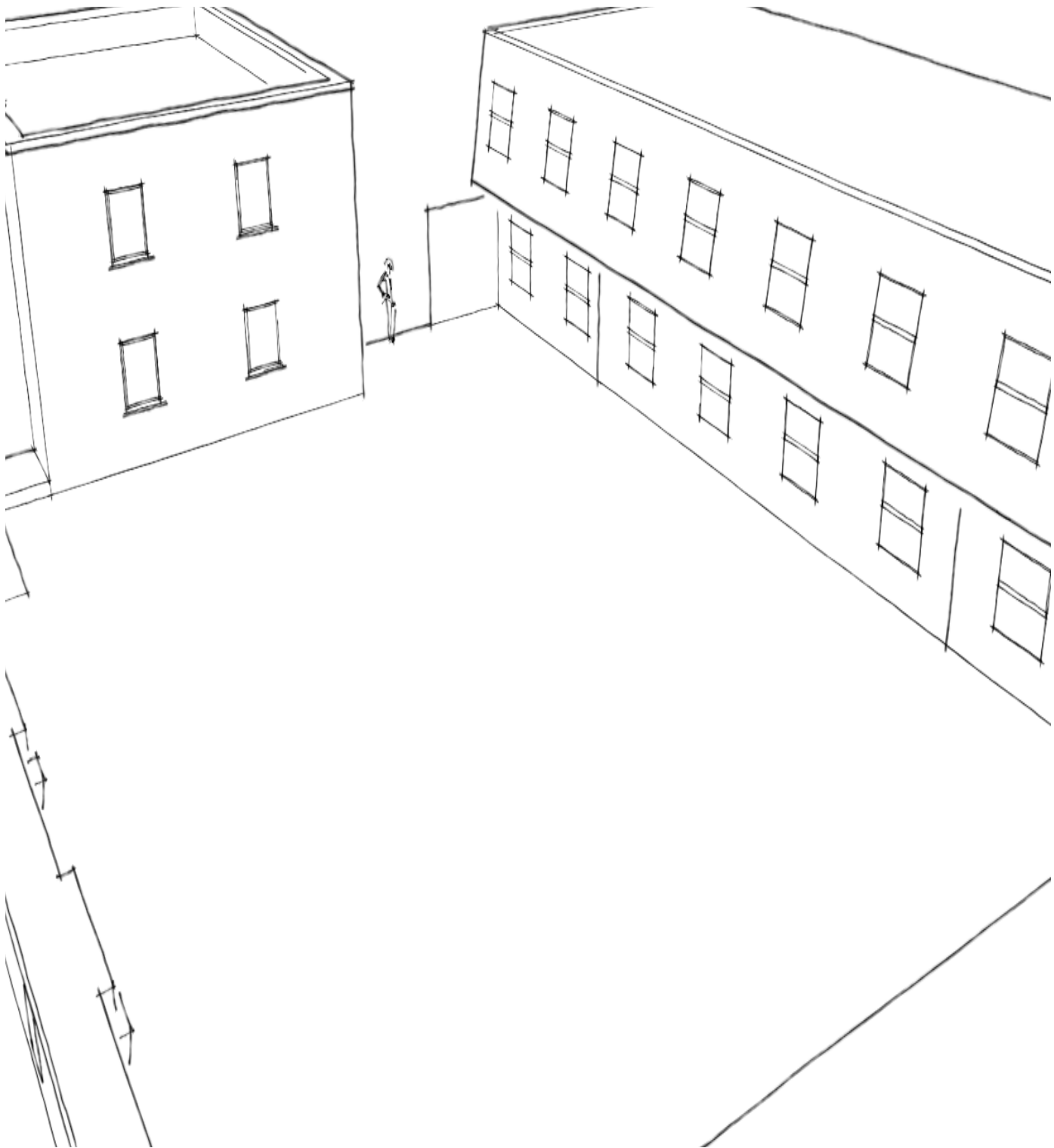
The Quad





# Wasted Space

## The Quad





# Wasted Space

## The Quad

